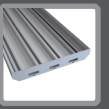


Zusatz-Anleitung



Alu-Stufenwanne

Bauteile:



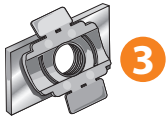
1



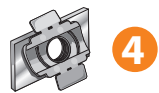
5



2



3



4

①-4 x Inbus M10x40

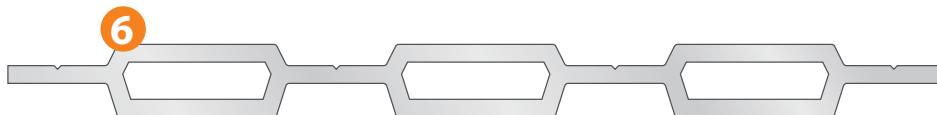
②-8 x Inbus M8x16

③-4 x Gewindeplatte M10

④-8 x Gewindeplatte M8

⑤-8 x Scheibe Ø10,5 A2

⑥-2 x Alu-Klemmprofil 264x20x21 (mit 3 Langlöcher)



6

Aufbau:

